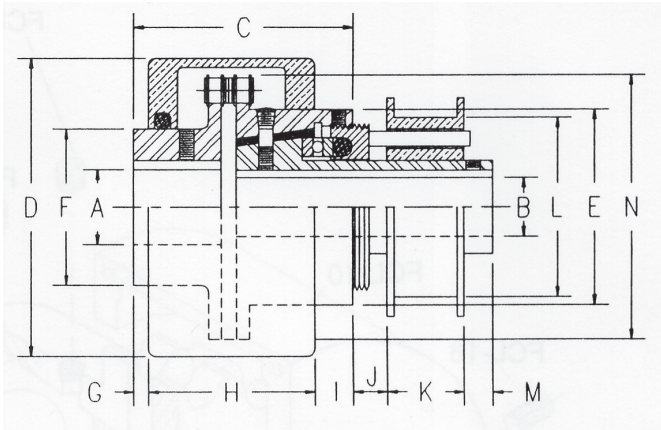


Model FCL Flexible Coupling Clutches with Shut-off



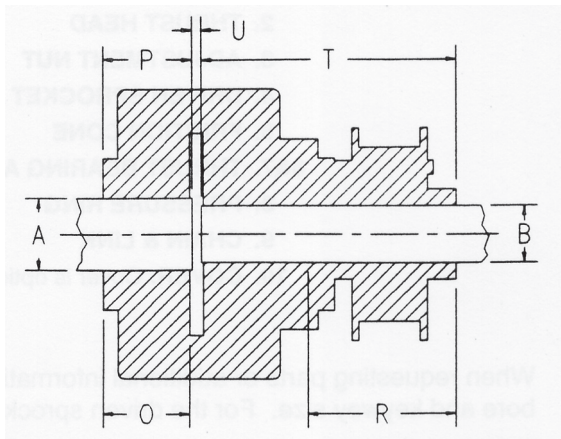
The Flaton Model FCL is a chain coupling style clutch with a built-in mechanical shut off spool. This shut-off spool allows for superior torque control when interfaced with a device such as a limit switch.

Dimensions

Model Number	Max. Bore		C	D	E	F	G	H	I	J	K	L	M	N	Max. Bore Keyway	
	A	B													A	B
10-FCL	1	3/4	4 5/8	3 13/16	2 9/16	2	3/16	2 1/8	1/2	7/16	1	2 1/2	3/8	3 3/8	1/4x1/8	3/16x1/16
15-FCL	1 1/4	1 1/8	5 3/4	5 1/8	3 9/16	2 3/4	5/16	2 5/8	3/4	1/2	1	3	7/16	4 5/8	1/4x1/8	1/4x3/32
20-FCL	1 1/2	1 1/4	6 5/8	6	4	3	7/16	3 3/16	1	1/2	1	3 1/4	1/2	5 1/2	3/8x3/16	1/4x3/32
25-FCL	1 3/4	1 3/8	7 5/8	6 3/4	4 11/16	3 3/8	7/16	3 5/8	1 1/16	11/16	1 1/4	3 1/2	5/8	6 1/4	3/8x3/16	5/16x1/8
30-FCL	2 1/2	1 15/16	9 3/16	8 5/8	6	4 3/8	11/16	4 1/2	1 1/2	5/8	1 1/4	4 1/2	5/8	7 7/8	5/8x5/16	1/2x3/16
35-FCL	3 1/4	2 5/8	10 1/2	10	7 1/4	5 3/4	1 1/16	4 7/8	1 15/16	3/4	1 1/4	5 1/4	5/8	9 1/4	3/4x3/8	5/8x7/32
40-FCL	4 1/2	3 5/8	13 1/4	13	9 1/2	7 3/4	1 5/16	6 1/4	2 1/2	1	1 3/8	7	3/4	11 7/8	1x1/2	7/8x5/16
45-FCL	5 1/4	4 1/4	16 7/8	16 3/4	12	9 1/4	1 3/4	7 9/16	7 9/16	1 3/8	1 3/8	8 3/4	1 1/4	15 1/4	1 1/4x5/8	1x3/8

All dimensions are in inches.

When considering shaft extensions both shafts must be greater than the minimum and less than the maximum on both the "A" and "B" sides.



Model Number	A Bore Side		Gap U	B Bore Side	
	O Min.	P Max.		R Min.	T Max.
10-FCL	1 1/8	1 3/16	1/8	1 7/16	3 3/8
15-FCL	1 1/2	1 9/16	1/8	1 15/16	4 1/16
20-FCL	1 3/4	1 7/8	1/8	2 1/2	4 5/8
25-FCL	2	2 1/8	3/16	2 11/16	5 5/16
30-FCL	2 1/2	2 11/16	3/16	3 5/8	6 5/16
35-FCL	3	3 3/16	1/4	4 1/4	7 1/16
40-FCL	4	4 3/16	5/16	5 3/8	8 3/4
45-FCL	5	5 1/4	5/16	7	11 5/16

